



# Organization Development Solutions

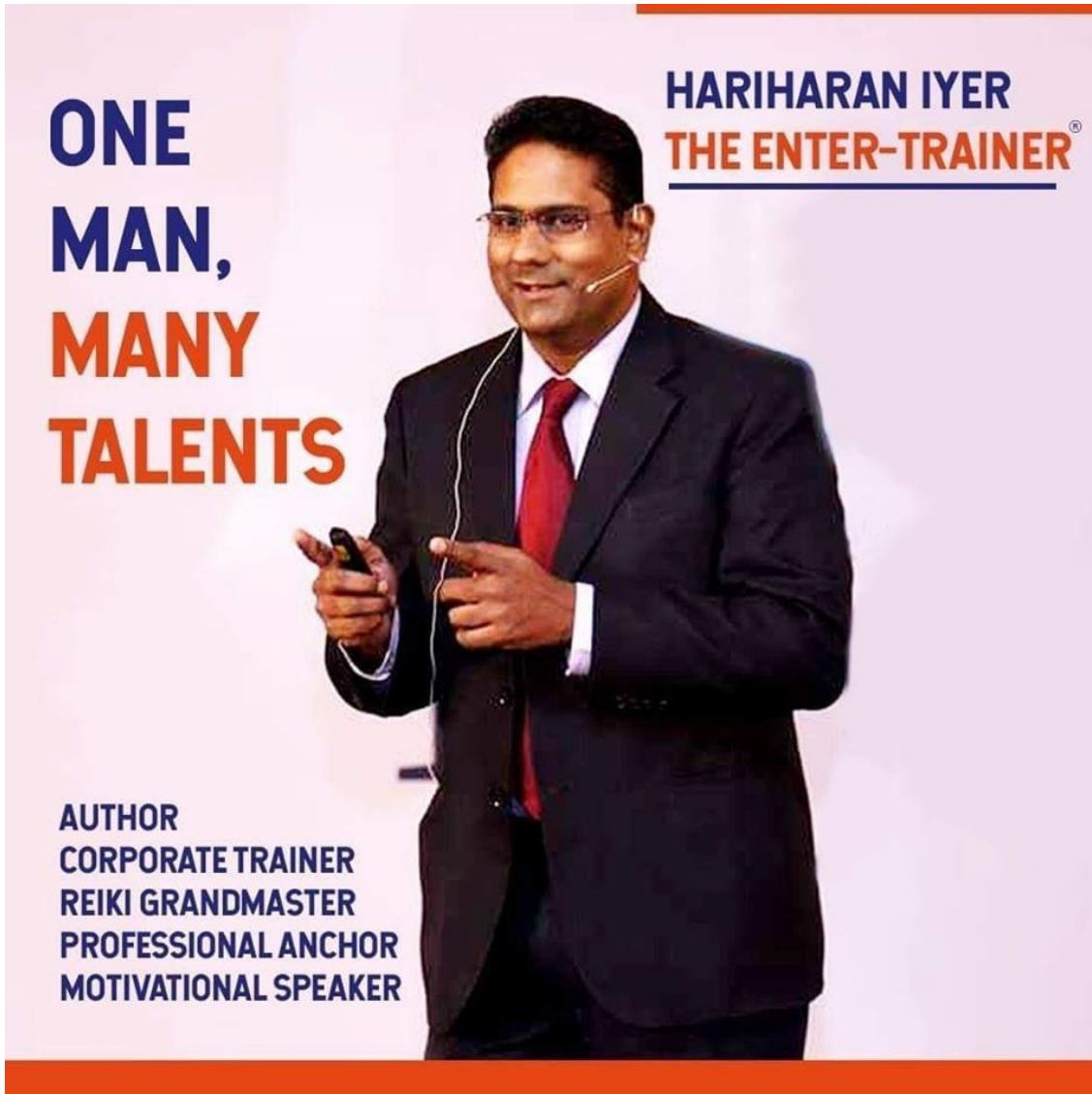
Presentation by  
Hariharan's School of Success Education  
(HSSE)



# Executive Summary

- Hariharan's School of Success Education (hereby referred as HSSE) is a holistic solution provider for an organization's talent development needs.
- Established in 2009 by Hariharan Iyer – Founder & Chief Mission Officer
- Dynamic team of Associates with industrial expertise in learning & development
- We would be happy to provide talent development solutions as per your convenience through on-site/ off-site / digital services.

# About Hariharan Iyer: The Enter-Trainer®



## **Chief Mission Officer – HSSE**

In 2009, Hariharan stepped into entrepreneurship to make a difference to the world through the power of learning by quitting a well-paying corporate job. He calls himself as a Learning Evangelist. He is a man with many talents:

- Motivational Speaker
- Corporate Trainer
- Author
- Reiki Grandmaster
- Professional Anchor
- Author



# Why consider HSSE ?

## Vision

Vision of HSSE is to build a Learning Empire by associating with like-hearted people, who share a passion to inspire common people to become uncommon through the power of Lifelong Learning.

## Mission

To help ordinary people become extraordinary through the power of fun-based learning and thereby enable people to fall in love with Learning

## Values

- **P**assion, **P**rofessionalism, **P**erseverance to Learn, Teach and Facilitate
- **I**nnovation, **I**ntegrity & **I**mprovement to stay clearly ahead
- **C**ustomisation, **C**raving & **C**raft for result orientation and Need satisfaction
- **A**daptability, **A**uthenticity & **A**wareness to context and content
- Be **MAD** – Make A Difference – That's the way to be!

# HSSE Solution Store

LMS

Certification Programs

Corporate Workshops

Motivational Talks

Surveys and Assessments



# Learning Management System (LMS)

<b>Popular Name</b>	The Enter-Trainer Digital Learning Academy (TEDLA)
<b>Objective</b>	Online solution for all kinds of learning - technical as well as behavioural
<b>Aim</b>	To inspire people to fall in love with learning by providing them with such an engaging experience that they feel as if it is happening offline
<b>Technology Partner</b>	Multinode Solutions, a training consultancy & mentoring organisation
<b>Platform</b>	Bloom – SaaS based Edutech
<b>Benefits</b>	<ul style="list-style-type: none"><li>• Self-paced learning</li><li>• Monitoring Progress</li><li>• Integration in existing system</li></ul>



# LMS Features

- Customised Interactive Modules developed by experts
- Track the results and progress of your learners through powerful reporting tools (progression, scores, time spent)
- Assess your learners through various quizzes or exams. Create end-of-course and regulatory assessments.
- Deliver certificates to your learners
- Turn your training into spaces for exchange and collaboration via contextual forum
- Use the power of video conferencing tools to facilitate collaborative Virtual Classes & Webinars
- Manage your users easily by creating groups. Assign specific roles to each user
- The platform empowers learning businesses with content control, user control and administrative control and thereby consolidating the business flow on a single window.



# Certification Programs

## Enter- Trainer Certification

- Unique and prestigious Train The Trainer program, registered under Government of India
- Certify trainers in organizations as Certified Enter-Trainers and enable them to conduct sessions in an engaging and fun manner.

## Certified High Impact Communicator (CHIC)

- Elevate your communication skills to another level
- Includes session on storytelling, communication styles, communication tools and a floor test

## Certified High Impact Professional Salesperson (CHIPS)

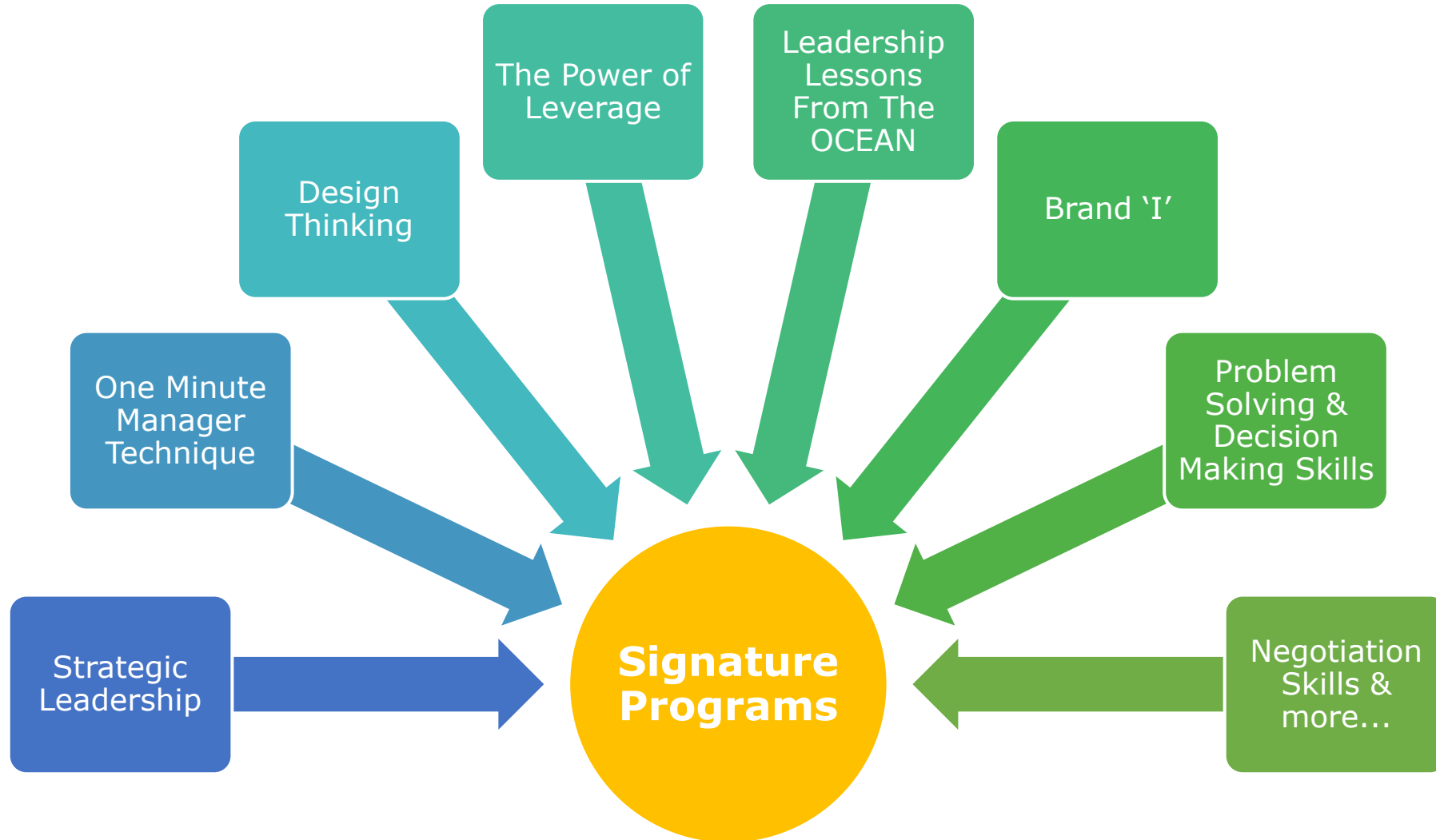
- Inspire people to become a passionate and productive salesperson
- Enhance Sales Productivity
- Covers Relationship based selling process /Ideas for Digital Selling

## Certified Power Performance Mentor

- For managers/ mentors to enhance team performance
- Based on 10 Power Performance Principles
- Includes assignment and practical exposures

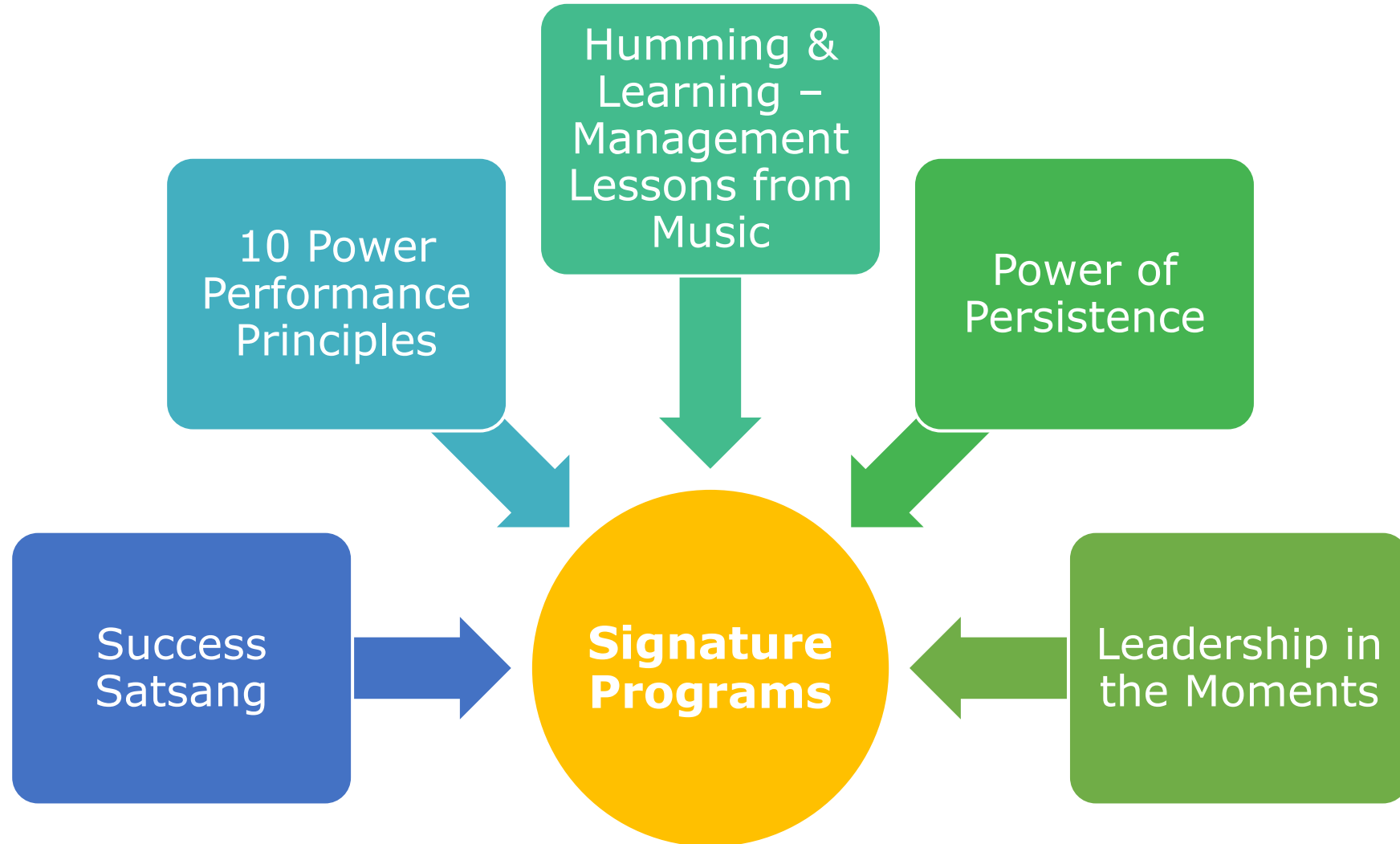


# Corporate Workshops



*Training programs can be customized, developed and designed as per organization and industry specific needs*

# Motivational Talks





# Surveys & Assessments

## Corporate Holistic-Fitness Instrument (CHI)

- CHI is a new-age Psychometric Tool rooted in timeless tenets of Holistic Wellness .
- CHI is based upon the maxim - `A Healthy Organisation Is A Productive Organisation` .
- The Survey will enable companies to create a comprehensive development roadmap with the aim of achieving productivity goals.

## Know Your Energy Y-Ring System (K.E.Y.S)

- A path breaking self-assessment which will help an individual to unlock their `Inner Potential`
- Keys is a new, energetic and dynamic way to look at yourself, Your life, your relationships, your work and your organisation



# Corporate Holistic-Fitness Instrument (CHI)

## Aim

CHI aims to help organisations find the right balance between the various energies and synergies of people for a common purpose.

## About CHI

- CHI (pronounced as Qi) is a holistic survey developed to decipher the learning needs of organizations
- CHI is based upon the maxim "A Healthy Organisation Is A Productive Organisation"
- The Survey will enable companies to create a comprehensive development roadmap with the aim of achieving productivity goals

# WHY CHI



There is a need for a tool which provides a holistic diagnosis of the organisation, and give an overall Health View with the help of a Fitness Score.



There are many surveys which measure various aspects of organisation health in isolation of one another.



The Fitness Score - marked as Low, Medium and High – along with an `Organisation Health Report` help companies with Key Recommendations and a Comprehensive Training & Development Roadmap



Provides insights about:

- Employees' fitment
- The development agenda that organisations need to take to create deeper alignment
- Course Correction.



It serves as the foundation for organisations to reflect on their Current State and move towards the Desired State.

**CHI measures Organisation Health on four key parameters:**



**Culture**



**Engagement**



**Health &  
Wellness**

**Emotions\***

# Emotions are based upon the 9 emotions of Navarasa:



**Shringara**  
(Love)



**Hasya**  
(Laughter)



**Karunam**  
(grief & compassion)



**Athbhut**  
(wonder & curiosity)



**Bheebhatsya**  
(Disgust)



**Veeram**  
(Heroism)



**Rowdram**  
(Anger)

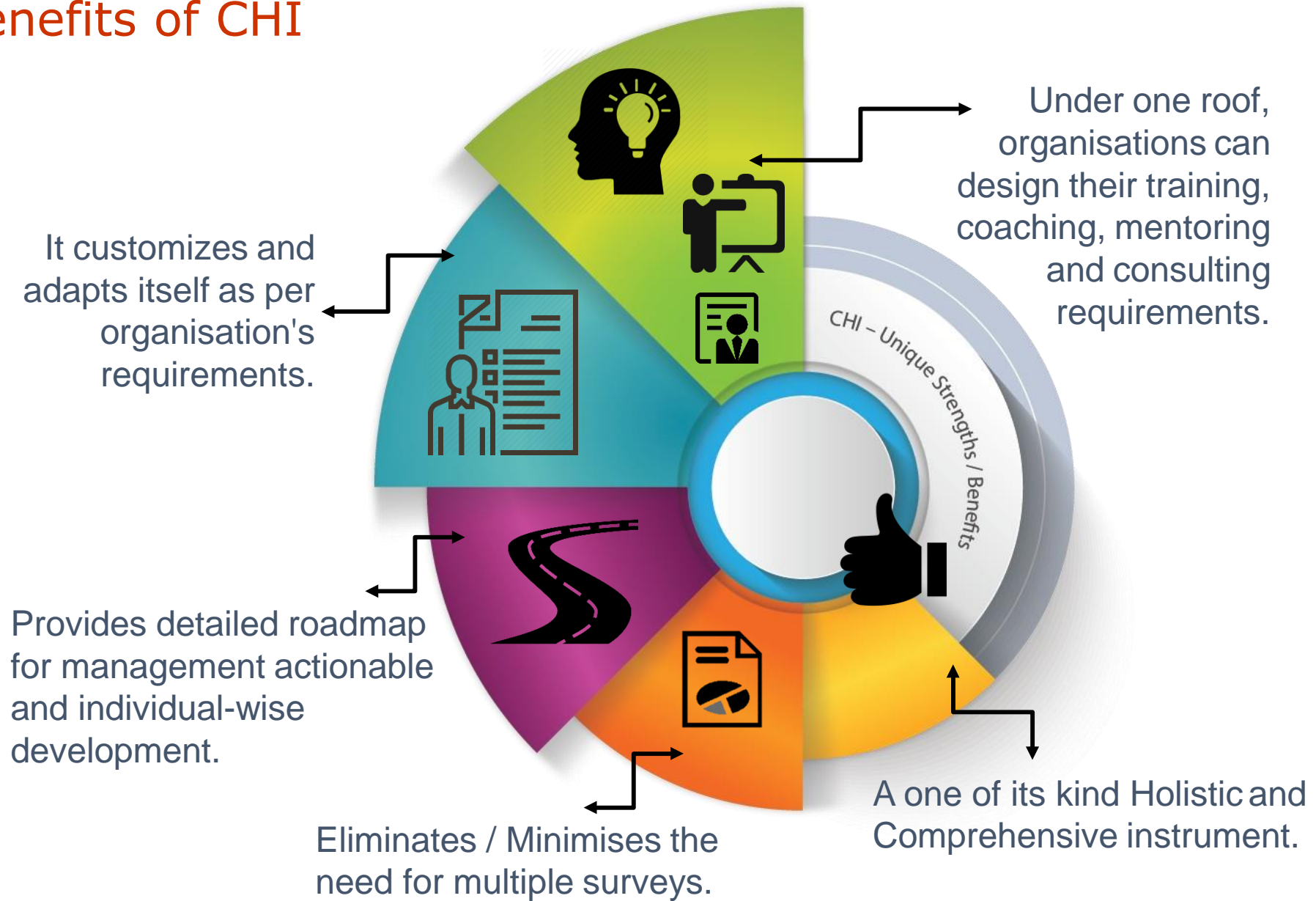


**Bhayanakam**  
(Fear)



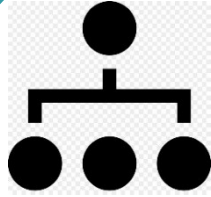
**Shaantham**  
(Serenity & peace)

# Benefits of CHI





# Administering CHI



CHI can be administered for the entire organisation or even for specific departments.

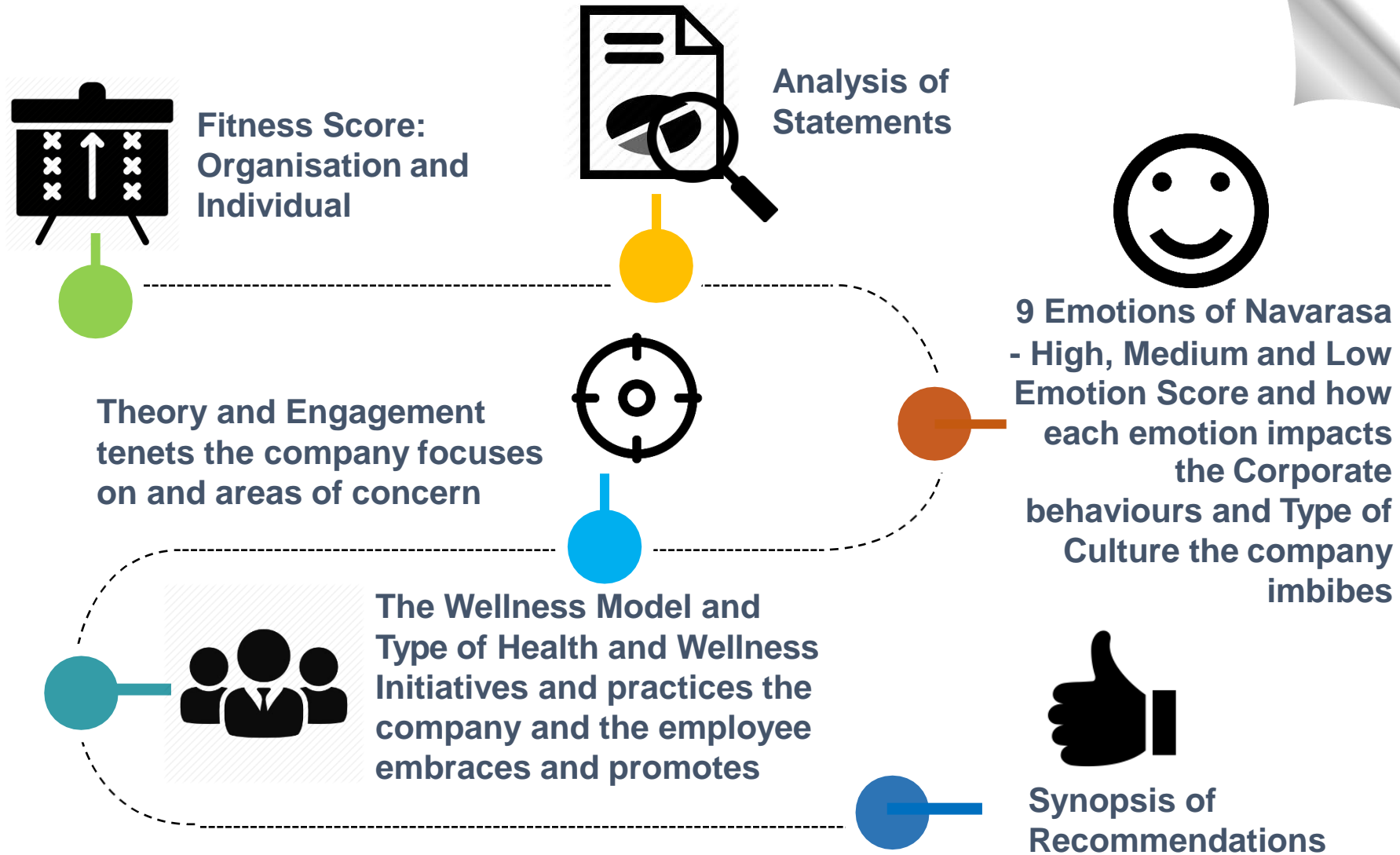


For it to be effective, at least 100 people must take the Survey



CHI will generate a Detailed Report

## Detailed Report Will Contain:



## Beyond CHI

**Our intention is to support organisations end-to-end from `Assessment to Achievement` by developing customised content and conducting relevant interventions.**

**Post report submission, we can engage with the management to facilitate a Transformation Roadmap.**

**With a large network of trainers / coaches / mentors, we are equipped to cater to the training / development needs of organisations in India and abroad.**



# Know Your Energy Y-Ring System (K.E.Y.S)

## Aim

To help individual discover their Active and Latent Energysets

## About KEYS

- KEYS will help an individual decipher the predominant Energysset they possess at present
- Energy has two aspects: Active & Latent
- KEYS will help you recognise your Active Energysset and get clues about your Latent Energset
- Experience a fascinating energy-set evaluation and also receive a comprehensive individual report of the evaluation.



# Why K.E.Y.S

- Leverage it as a pre-hiring tool
- From the energy evaluation assessment report, team leaders can assess role suitability for their team members
- Leverage it as a leadership assessment tool
- Discover the overall organization's active and latent energies and take specific suitable actions



# Our Core Team



## Dilip Kumar Sharma

An Author, L&D, LMS, E-learning Content Consultant with over 15 years of experience in trainings in the Insurance Sector. Former Air Warrior in the Technical Wing of the Indian Air Force for almost 18 years before venturing into corporate world.



## Juhi Gupta

Juhi is an experienced Soft Skills trainer, HR Consultant and Career Counsellor with almost 15 years of experience. She comes with a rich experience of imparting trainings to corporate professionals, management graduates, engineering graduate and post-graduates.



## Khorehmand Katrak

KK, as he is popularly called, is a successful financial planning professional and trainer. He is a Certified Enter-Trainer and an avid learner and trainer. He spearhead our Communication Certifications - Certified Enter-Trainer and Certified High Impact Communicator.



## Niharika Bhargava

Masters in Human Resource Management from the London School of Economics with over 10 years of work experience with Johnson & Johnson, Essar Group, and Axis Bank. She is the mind behind conceptualization of CHI and similar psychometric tools.

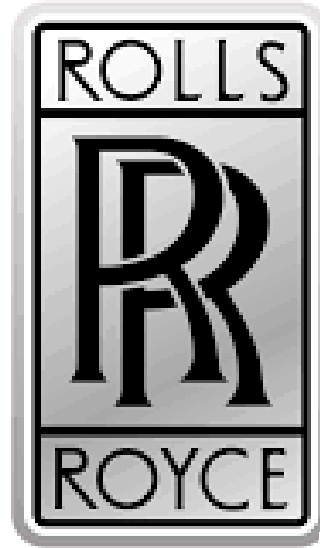
# Our Network of Associates

We are associated with a wide network of trainers and consultants who can be leveraged for various organization development projects.





# Few Companies For Whom We Have Conducted Programs







# Lets Connect

Website : [www.thehsse.com](http://www.thehsse.com)

Mail : [hsseconnect@gmail.com](mailto:hsseconnect@gmail.com)

[hariharan@theentertrainer.in](mailto:hariharan@theentertrainer.in)

[lifetransformation69@gmail.com](mailto:lifetransformation69@gmail.com)

Mobile : +91 88988 80676 /  
+91 9911007580

